

# February 2019 Nuances

[Campaign Preview](#)

[HTML Source](#)

[Plain-Text Email](#)

[Details](#)

[View this email in your browser](#)



## Nuances

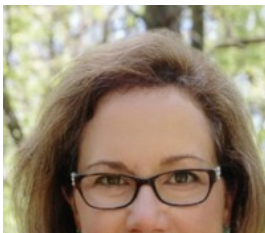
### The Newsletter of MAME

February 2019  
Volume 49, Issue 6

### President's Message

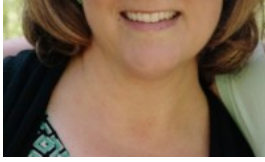
Every time I think of it, I'm amazed at how much our volunteer Board brings to Madison's rich music community. Last month MAME was very busy, and February will be no different with several events. This weekend we will host our Honors Recitals, and next week will be a monthly program meeting. I hope you're preparing for the WMTA district auditions, into which MAME members are entitled to enter students. Details for all upcoming events are below.

Are you familiar with our [google calendar](#)? Our events are neatly listed, so be sure to check it out. While you're at it, be sure to visit our [website](#) or our [facebook page](#): Madison Area Music Educators MAME. Soon we will be looking for Board members for next year. If you're particularly interested in an event, please email me about joining our Board. I enjoy the camaraderie at each meeting and appreciate the dedication of our Board!



[Denise Taylor](#)

MAME President



---

## **Honors Recitals 2/3/2019**

The Honors Recitals will be held on Sunday, February 3, 2019 at Morphy Hall, UW School of Music. The junior recital will be at 1:30pm and the senior recital at 3:00pm.

**PLEASE NOTE THE NEW RECITAL TIMES.**

When? 2/3/2019

Time? 1:30 and 3:00PM

Where? Morphy Hall, UW School of Music

455 N. Park St, Madison WI 53706

[Liz Agard](#) and [Nancy Wynn](#)

---

## **MAME Program on 2/8/2019** **Pianolates-From the Mat to the Bench!** **A Guide for Physical/Mental Warmups**

This interactive session will explore how the six core principles of Pilates relate to piano playing, cultivating greater somatic awareness, attaining better balance, improving the body-mind connection, and enhancing artistry.

When? 2/8/2019

Time? 9:30-11:30AM

Where? Heid Music-7948 Tree Lane, Madison WI 53717

Presenter? Anna Siampani

[David Barach](#)

---

## **Performers Supporting Performers on 2/15/2019**

Performers Supporting Performers will meet on Friday, February 15, 10am at David Barach's, 820 Williamson St., Apt. 106, Madison. Members interested in playing or just listening are welcome! PSP is

planning a recital on Sunday, March 3, 3:30pm at Oak Park Place, 718 Jupiter Drive. Plan to join us!

When? 2/15/2019

Time? 10:00AM

Where? 820 Williamson Street, Apt 106, Madison WI

[Ruth Heinecke](#)

---

## WMTA District Auditions Deadline Approaching 2/18/2019

WMTA District Auditions are coming up soon! The event takes place Sunday, March 17, at the UW Mead Witter School of Music. A friendly reminder that the application due date is coming up fast – registrations must be done and payments must be postmarked **on or by Monday, February 18**.

Here are a few links to assist you in the process:

-WMTA District Auditions – Info for Parents ([see attached](#))

-WMTA Quick-Start Guide ([see attached](#))

-WMTA Theory Test info - <https://bit.ly/2Kw8Wdr>

-Ovation Registration – Complete Users' Guide - <https://bit.ly/2H9V1vF>

I am available for help via e-mail, answering your questions there, or scheduling phone appointments:  
Thanks and see you soon!

[Emily Schultz](#), Madison District Chair of WMTA District Auditions

---

## Adult Music Social 4/7/2019

The Spring Adult Music Social will be held on **Sunday, April 7th at 2:00 pm**. Please encourage all your adult students to participate in this opportunity. The event is fairly informal and will help pianists at all levels to become more comfortable sharing their music with others. Pieces can be memorized or played with music. Adult students who would first like to learn more about the social are also welcome to attend without playing that afternoon. Those attending are requested to bring a small plate of cookies or other food to share. Contact Cheri Lewis at 608.222.5125 with any questions.

Cathy Crams (student of Ruth Heinecke) will be hosting the event at her home:

When? 4/7/2019

Time? 2:00PM

Where? 11674 Midtown Road, Verona 53593

Thanks!

[Cheri Lewis](#)- Adult Social Chairperson

---

## **Music Composition Festival from 1/19/2019**

The Music Composition Festival celebrated its second event of the year on Saturday, January 19 at the Shad Wenzlaff Piano Studio. Three students spent part of their afternoon talking about how to notate a composition, and more importantly, how to develop and refine a composition.

Our third and final workshop of 2018-19 will involve a hands-on session geared almost entirely toward notating a developed/developing composition. The final workshop will require participants to have attended a least one of the previous two workshops, and is designed to prepare students to enter the state composition festival which is formally sponsored by WMTA. If this interests your student, and you have attended one or both of the previous events, please email me.

I have set the schedule, tentatively, for the second Saturday in May. Finally, if teachers have suggestions for how to plan the music composition event for 2019-20, please share your ideas with the MAME board, or with me directly. We are open to creating an event that best serves the interests of our membership.

Yours in music and creativity -- [Shad Ryan Wenzlaff](#)

---

## **MAME Masterclass from 1/12/2019**





Masterclass participants are (from L to R): Christopher Taylor, Katie R, Monona S, and Celia M.

On Saturday 1/12/19, three talented students played in a master class, led by world-class pianist Christopher Taylor. Both performers and observers learned much from from Mr. Taylor's insightful comments. Please mark your calendars for the final master class of this season; Saturday 4/6/19 at 6 PM, at Steinway and Sons, led by esteemed UW-Madison Professor Jess Johnson. I hope to see you there.

When? 4/6/2019

Time? 6:00PM

Where? Steinway Gallery- 6629 Mineral Pt Rd. Madison, WI 53705

[Jess Salek](#)

---

## Piano PlayTogether Preview from 1/11/2019

Thank-you to the members who attended the unveiling of the PPT music for our upcoming event. We are programming "Music We Love"; everything from Abba and Lady Gaga, to Christina Perri, Star Wars, and Disney tunes! To add an extra twist to this already unique event, we are featuring star piano soloists to perform Fur Elise with a 2nd piano accompaniment, and the Chopin Fantasie Impromptu with prelude and postlude by a very young group of level 1 performers. We are still working out details for more solo opportunities, stay tuned! If you have a star piano student who is a well seasoned performer, and is, or would like to learn the original Fur Elise, please contact us now to set up an audition. We have already selected a performer for the Chopin. The purpose of the Piano PlayTogether is to give students the opportunity of collaboration and performance with a conductor, and to bring attention to the piano, and all of its magnificent benefits of study. It's up to us to keep this excitement alive! We believe with our music choices, that we'll succeed. Let's make it a win-win-win for everyone, and get involved. We need you.

The entire PPT music listing will be in the March edition of Nuances. Stay tuned...

[Lana Robotewskyj](#), [Shad Wenzlaff](#), and [Debbie Yee](#)

---

## Treasurer's Request

Dear MAME Members,

In order to do my best job as treasurer of MAME, I need a paper trail as proof of transactions. This also

makes it easier for the auditor when the books are audited at the end of the fiscal year. There is an official reimbursement/payment [request form](#) available on the [MAME website](#). Please use it. A phone message or quick e-mail without accompanying information (i.e., check made to . . . , address to which to send the check, etc.) does not suffice and I will not make out a check until proper paperwork is submitted. Also, if you know far in advance that you will need money, please don't wait until the last minute to ask for it. I might not be immediately available to fulfill your needs.

Thank you for your consideration in this matter,

[Cynthia Stephan](#)

---

## **Please Welcome our Newest Member!**

Kangwoo Jin (student)

509 N Lake St, #404

Madison, WI 53703

(812) 340-1362

[KJin5@wisc.edu](mailto:KJin5@wisc.edu)

[www.pianistkangwoojin.com](http://www.pianistkangwoojin.com)

---

## **MAFOP Piano Play-A-Thon 2/9/2019**

Madison Area Friends of Piano announces its annual Piano Play-A-Thon. This is a fundraiser for the American Family Children's Hospital (AFCH). Piano students solicit donations in order to play in this event. The funds raised at this event specifically benefit the Music Therapy Program at AFCH. The 2019 Piano Play-A-Thon will be held on Saturday, February 9 at the Barnes & Noble West Towne. This event is a wonderful way for students to share their talents while helping those in need. If your studio has participated in the Piano Play-A-Thon in the past, you should have received registration information earlier this fall. You may email me for information on how you can sign up your studio.

[Jeanne Felix](#)

---

## **Bach Around The Clock 3/2/2019**

Do you love J.S. Bach? If so, be sure to participate in Bach Around The Clock, a celebration of his 334th birthday in a marathon concert that is free and open to the public. Performers range from young students and adult amateurs to professional musicians. This year's event is scheduled for March 2, 2019 at St. Andrew's Church, 1833 Regent Street in Madison, and also on Live at the Chazen radio broadcast the next day. We are inviting teachers to sign up for a time slot -- either for themselves or for their students. More information and signup link can be found at [bachclock.com](http://bachclock.com). And of course, please consider joining us in the audience. Last year, more than 600 people attended throughout the day!

[Denise Taylor](#)

---



**MAME gratefully acknowledges our 2018-19 Sponsors:**

**Platinum Sponsor**

**HEIDMUSIC**

**Gold Sponsor**

Farley's House of Pianos

**Silver Sponsor**

Steinway of Madison

---

**Submissions:**

Completed submissions of articles, events and other music-themed features are welcome. All submissions are

due by the 21st of each month to be considered for publication.

Nuances acting Editor: Lana Robotewskyj (nuances@madisonmusiceducators.org)

---

---

*Copyright © 2019 MAME, All rights reserved.*

You are receiving this e-mail because you are a registered member of MAME for 2018-19 and you opted to receive an electronic copy of Nuances. If you no longer wish to receive these e-mails, click "unsubscribe" at the bottom of the page.

**Our mailing address is:**

MAME  
PO Box 44152  
Madison, WI 53744-4152

[Add us to your address book](#)

Want to change how you receive these emails?  
You can [update your preferences](#) or [unsubscribe from this list](#).

