



# Nuances

The Newsletter of MAPTA

April 2012 Vol 42 Issue 9  
MAPTA Calendar of Events

4/8 YAR Recital Deadline

4/10 General Meeting

4/17 Pro Goals

4/22 YAR Recital

4/27 PSP Meeting

5/22 Board Meeting

The Final Note

## Quick Links

[MAPTA Membership](#)

[Contact MAPTA Officers and Directors](#)

[Last Month's Issue of Nuances](#)

[Advertising in Nuances](#)

## Share The Music!

Do you know someone who could benefit from joining MAPTA? Send them this issue of Nuances by clicking the link below.

## Submissions

Complete submissions of articles, events or other piano themed features are welcome. All submissions are due by the **21st of each month** to be considered for publication.

Nuances Editor:  
Grant Billings  
c/o Billings Piano Gallery  
6629 Mineral Point Road  
Madison WI 53705  
[nuances@BillingsPiano.com](mailto:nuances@BillingsPiano.com)

## Studio Exchange Teachers

Contact [Gloria Chuang](#), [Denise](#)

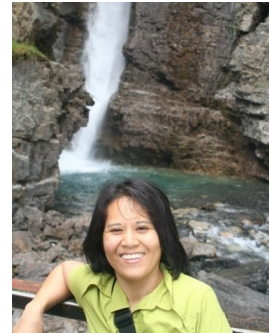
## President's Message

[Patty Ladpli](#)

Dear ,

Wow! Here we are--it's Spring!

As we jump forward into the final events of the school year, board members have been busy at work planning for the upcoming year's events, as well as for MAPTA's future.



Please take part in this planning by sending a ballot for your favorite program topics and speakers for future MAPTA events. The board would like to bring in speakers and topics that would benefit our members, but we need to know what would interest you! Many thanks to Alena Harrison, Helaine Muehlmeier and Stacy Regehr of the programs committee!

April is the last month for MAPTA performance opportunities--including the Young Artist Recital, the Adult Music Social and our last Performers Supporting Performers meeting of the year. Special thanks to Irmgard Bittar, Renee Farley, Cheri Lewis and Ruth Heinecke for their help in organizing those events this year.

I think it's so nice that we are able to provide our students and their families with great memories through their music study and participation in the special events like MAPTA organizes. Please enjoy that thought as we bring the school year to a close.

Best wishes for a beautiful spring!

Patty Ladpli  
MAPTA president

2012 MAPTA Member Survey

[Taylor](#), [Shad Wenzlaff](#), or [Debbie Yee](#) if you are interested in being a part of the Studio Exchange Program.



The Annual Member Survey is LIVE!

Your feedback will be used to help the Board plan for the coming year and beyond.

[Please click here to complete the survey](#)

The survey only takes about ten minutes to complete and will be available until **April 30th**.

### Young Artist Recital - Registration Deadline *Sun, April 8*

The final YAR of the 2011-2012 season will be held on April 22, 2012. This recital will be at Oak Park Place in Grandview Hall, 718 Jupiter Drive. Warm-ups will begin at 1:00 with the performance beginning at 1:30. Send your registration by email [Irmgard Bittar](#) or mail to Irmgard at 7326 Cedar Creek Trail, Madison, WI 53717

Questions can be directed to Irmgard at 826-0385 or Renee Farley 238-1871.

### Renew Your Membership ONLINE!



Now you can renew your membership online. Plus, we've added more convenient ways to pay, including PayPal, online check and credit card.

Simply [click here](#) to complete the easy and safe form.

Contact Shad Wenzlaff for more information. You may also join the using snail mail and a check. Click here to download the and print the membership form.

**General Meeting** *Tues, April 10 - 9:00 -11:00 am*  
Christ Presbyterian Church, 944 E. Gorham St., Madison

Piano Pedagogy for the iPod Generation, New and Noteworthy Piano Methods - Shad Wenzlaff

We will look at recent additions to the piano teaching repertoire and examine the current studio track for the "Comprehensive Musicianship Project".

Shad will offer strategies for teaching to unique learning styles, retaining the "difficult-to-teach" ("iPod Generation") student, and offer resources for male students as well as "quiet" students - these are seen as students whose learning strategies don't always readily match traditional teaching styles and methodologies. Patty Ladpli will also do a brief presentation on a workshop she attended called, "Child Development for the Suzuki Teacher."

[Click here for directions](#)

**Pro Goals** *Tues, April 17 - 9:30 am*  
Pancake Cafe, 6220 Nesbitt Road, Fitchburg

The Pro-Goals committee met on Tuesday, March 20 at 9:15 AM at the Sequoia Branch Library in Madison. MAPTA members present were Jeanne Felix, Patty Ladpli, and Diane Madsen.

Topics covered were: 1) Website updates 2) Review of new MAPTA marketing brochure created by Tim Mueller 3) Dates and sites for the 2013 Piano Play-Together and 4) 2012-13 program agenda.

The next Pro-Goals meeting topics will include:

1) Remedies to MAPTA's consistent budget deficits each year 2) Discussion on a minimum amount to keep in savings for MAPTA's financial security 3) MAPTA sponsored event fees 4) Distribution of the new MAPTA brochure and 5) Patty's birthday

All MAPTA members are invited and encouraged to attend the Pro-Goals meetings to learn more about how MAPTA functions as an organization.

For more information, see the Membership Directory or contact [Jeanne Felix](#) or [Diane Madsen](#).

[Click here for directions](#)

**Young Artist Recital** *Sun, April 22 - 1:30 pm*  
Oak Park Place, Grandview Hall, 718 Jupiter Dr., Madison

Refer to the MAPTA directory, page 14 for more information or contact [Irmgard Bittar](#) or [Renee Farley](#) at (608) 238-1871 with questions.

[Click here for directions](#)

**Performers Supporting Performers Meeting**  
*Fri, April 27 - 10:00 am*  
Denise Taylor's Studio - 584 Fargo Trail, Middleton

Ten teachers performed in the Annual PSP Recital on March 4. This was a record number of teacher performers! Our April meeting is our final meeting. It will be held at Denise Taylor's studio, which is a different address than her home address, as listed in the MAPTA directory. Anyone wishing to play, or just listen is welcome to attend!

[Click here for directions](#)

**Vote For Your Favorite Programs Ideas!**

[Helaine Muehlmeier](#)

Here are some prospective program ideas for next year and a little beyond. Please vote for the programs that you would be most interested in attending by sending a ballot to the programs committee. Vote for as many as you would like, as soon as possible. Send your e-mail ballot to: [Helaine Muehlmeier](#).

1) Welcome Back Round Table: Student practice plans/strategies, building camaraderie in studio, incorporating listening into the lesson, any other possibilities--please share!

2) Andrew Hisey: Carnegie Hall Achievement Program

3) Possible Fall Workshop speakers for next few years:

Suzanne Schons - (U of St. Thomas, St. Paul, MN) The brain and its role in music study, practical advice on what works and what does not work as far as the brain and practice and memory

Vanessa Cornett-Murtada - (U of St. Thomas, St. Paul, MN) a hypnotherapist who specializes in

treating performance anxiety. Current research on human consciousness and music performance.

Beth Bauer - (Wheaton College, IL) Expert on teaching music to physically and mentally challenged children

Dallas Weekley and Nancy Arganbright - Piano duo team could speak at the Fall Workshop and conduct for the Piano PlayTogether

4) Round Table on Fall Workshop

5) Teachers' Forum - Sharing repertoire that grabs students, proven war horses that are sure to work with students, repertoire that sounds harder than it is!

6) Doug Jurs - Latin repertoire (local speaker, UW grad)

7) Jihun Cho - Cross Cultural issues in teaching styles with teachers, parents and students (local speaker, UW grad)

8) Presentation of the repertoire list for the 2013 Piano PlayTogether

9) Making student recordings during the lesson into CDs for gifts or pre-screening auditions

10) Ludmilla Lazar - (Roosevelt U, Chicago,) could speak on the Chopin Mazurkas

11) Kristin Shoemaker - (Twin Cities) teaches students in an African village via the internet. It is a heart-warming story. She is very helpful to those who wish to investigate distance learning.

**MAPTA Board Meeting** *Tues, May 22 - 9:00 - 11:00 am*  
Sequoia Library, Conf Room A, 4340 Tokay Blvd, Madison

[Denise Taylor](#)

All MAPTA members are invited to attend.

[Click here for directions](#)

### MAPTA Continuing Education Grant Program



Continuing education grants of up to \$100 are available to assist teachers in their professional development. Funds are designated for non-MAPTA activities such as pedagogy conventions, piano workshops, or lessons.

Please [fill out this form](#) and forward to the MAPTA Vice President, [June Zeeh](#). The form is also found on the MAPTA website. Grant inquiries can be made before the event; however, funds will be disbursed only after the event is completed and specific requirements fulfilled. The applicant will give a detailed synopsis of at least fifteen minutes in length at a future program or roundtable discussion preceding the general meeting. The applicant must also write an article detailing his or her completed activity to accompany the grant request.

Once the grant has been approved, the presentation accomplished, and the article published in Nuances, funds will be disbursed.

### Karen Larbalestier Memorial Gathering



Please join friends and family members in a memorial gathering to remember Karen Larbalestier, past president and honorary life member of MAPTA. The gathering will be held on Saturday, April 21 at 5:00 pm at Farley's House of Pianos.

### Exploring Music Resources

[David Karbler](#)

Classics for the Developing Pianist Book 1, Early Intermediate - Item# 00-37284, \$8.99. Book 2, Intermediate - Item# 00-37285, \$9.99. Book 3, Late Intermediate - Item# 00-37286, \$9.99. Books 4 and 5 - due late 2012 from Alfred Publishing. The five books in this series present 100 masterworks ranging from early-intermediate through advanced level that the editors believe developing pianists should study and perform. Each book contains 20 pieces from the four main style periods as well as additional suggestions for repertoire from the 20th century.

New from Hal Leonard Publishing: My First Classical Songbook - Item# 00312532, \$17.99. This collection features easy piano arrangements of 34 well-loved classical melodies. Each piece is illustrated with full-color classic and contemporary art chosen to represent the musical themes.

The Fabers have released "second edition" books for Piano Adventures Levels 2A and 4 (Lesson, Theory, Performance, Technique & Artistry) The Technique book is new for Level 4, Item# 00420339, \$6.50. Hal Leonard has two sets of item numbers for each version. For example: 00420174 = Level 2A Lesson Book Second Edition and 60420174 = Level 2A Lesson Book Original Edition. A "60" prefix is used for teachers who still request the original edition.

Favorite Festival Solos - 10 Great NFMCSelctions, Item# 00416930, \$7.99. These are early to late elementary pieces from William Gillock, Randall Hartsell and Carolyn Miller. Each piece has been newly engraved and contains performance notes from each composer.

Two new collections featuring original compositions for the late intermediate player: Piece by Piece, Book 3 by Tom Gerou. Item# 00-37734, \$6.99, Alfred Publishing. Seven late intermediate color pieces for solo piano. Lyric Scenes by Mary Leaf. Item# FJH2193, \$5.95, FJH. Good reading and rhythmic skills are needed to express the technical and artistic elements in these pieces.

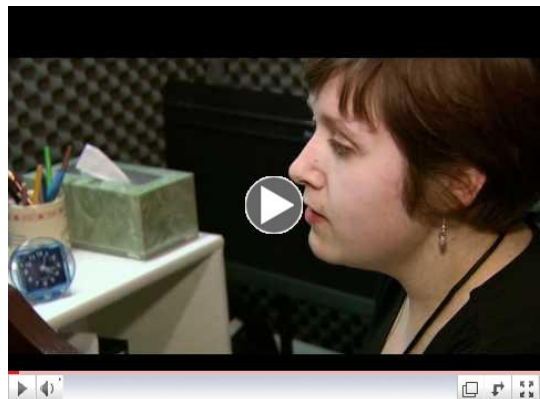
### Rhapsody Arts Center Recognized by Madison Magazine

[Grant Billings](#)

Rhapsody Arts Center in Verona, where MAPTA member Mickey Lytle teaches, was named one of Madison's Best Places to Work 2012.

The annual survey, compiled by Madison Magazine, anonymously measures six areas of employee engagement: trust, management, development, rewards, connection, and life-work balance. To qualify to compete, at least half of each company's employees must fill out the extensive survey, a mix of both pointed and open-ended questions, which are then evaluated by business experts.

Local CBS affiliate, WISC-TV, selected Rhapsody Arts Center from among twenty local businesses to receive the honor to be profiled on their "Live at Five" program on March 20th, 2012. In the interview, Managing



Director Leo Van Asten attributed their business success and high employee morale to each student getting individual attention. "We're here for the purpose of educating and we really enjoy it," Van Asten said.

Watch the 'Live at Five' Feature

In being recognized, Rhapsody Arts Center finds itself in very good company. Other winners this year included UW Credit Union, Madison Mallards Baseball Club and American Players Theater.

Congratulations to everyone at Rhapsody Arts Center on this achievement and on helping to promote music education!

The entire report can be found in the April 2012 issue of [Madison Magazine](#).

Piano-Bank Deadline *Mon, May 12*

[Jan Tweed](#)



The Wisconsin Foundation for School Music and Steinway Piano Society provide pianos to students who are not able to afford a piano. If you know of a student who would benefit from applying for a piano, [click here](#).

The next application deadline is May 12.

2011 Piano Bank Recipients

Key-Up-for-Kids Piano Playathon News

[Renee Farley](#)



Madison Area Friends of Piano is pleased to report that we have over \$9,700 in playathon donations with some pledges still expected to come in.

Thirty students raised \$100 or more. Their names went into the drawing for the grand prize. The winner of the Great Wolf Lodge stay for a family is Andrew McCardle. The teacher whose studio brought in the most pledge money was Diane Totten. Extra tee shirts are being donated to the Salvation Army location which provides shelter to those families who are homeless.

Congratulations to all students and teachers who participated in this exciting 20th anniversary year of the playathon. MAFOP thanks all participants, Barnes & Noble West, Pedro's, Great Wolf Lodge, Magic 98 and all the media that covered the playathon.

MAFOP encourages MAPTA teachers to tour the American Family Children's Hospital Child Life division some time to see how the donations have been put to use. It is a heartwarming experience.

2012 PianoArts Biennial Competition Registration Deadline *June 7 - 13*

[Sue Medford](#)

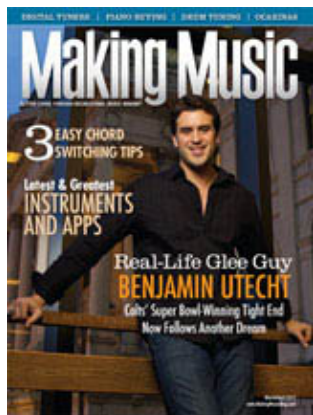
The 2012 PianoArts Biennial North American Competition will take place in Milwaukee, WI and is open to contestants aged 15 - 20 years old. Prizes total more than \$22,000 and include a scholarship to attend the 2013 International Keyboard Institute and Festival at Mannes College of Music in New York City, as well as performances in major concert halls and fellowships to perform for diverse Milwaukee audiences.

A total of 12 contestants will be advanced to the semifinals in Milwaukee, based on their submission of a DVD performance in the preliminary round. (All DVDs must be submitted by February 24.)

[Click here for more information.](#)

## The Final Note

[Grant Billings](#)



My friend Antoinette Follett has worked hard as Editor-in-Chief of Making Music Magazine to build a publication that guides and informs anyone interested in playing an instrument. If you haven't seen it before, the magazine features great information for students, parents and teachers.

I asked and Antoinette came through. Now, MAPTA members can get an issue for free and/or a huge discount off the regular subscription rate.

[Click here for more information](#)



Try it FREE today.