



Nuances

The Newsletter of MAPTA

October 2010 - Vol 41 Issue 2

10/3 Young Artists Recital
10/8 Round Table
10/15 Fall Workshop
10/15 Sonata Festival Deadline
10/19 Pro Goals
10/22 PSP
10/24 YAR Deadline
11/2 Board Meeting
Piano Play Together
Fall Music Social
General Meeting Minutes
Final Note

Quick Links

[MAPTA Membership](#)

[MAPTA Membership Form](#)



[PPT Practice Schedule](#)

[Contact MAPTA Officers and Directors](#)

[MAPTA Members Only Site](#)

[Last Month's Issue of Nuances](#)

[Advertising in Nuances](#)

Submissions

Complete submissions of articles, events or other piano themed features are welcome. **All submissions are due by the 21st of each month to be considered for publication.**

Nuances Editor:
Grant Billings
c/o Steinway Piano Gallery
6629 Mineral Point Road
Madison WI 53705
nuances@SteinwayMadison.com

Studio Exchange Teachers

Contact [Gloria Chuang](#), [Denise Taylor](#), [Shad Wenzlaff](#), [Debbie Yee](#) or [Joanna Grace](#) if you are interested in being a part of the Studio Exchange Program.

Board Meeting UpDate

The dates for several Board Meetings have been changed from those listed in the Directory.

Board Meetings will be held on:
November 2
January 25
March 1

The locations listed in the Directory are correct.

Spread The Love!

Do you know someone who could

President's Message

[Debbie Yee](#)

Happy Fall, !

The school year is into full swing and a couple of MAPTA members have already presented two wonderful professional events.



A big thank you goes to Joanna Grace for her presentation on business policies for our studios at the first general meeting on Tuesday Sept. 14.

Another huge thank you goes to Shad Wenzlaff for chairing a marvelous piano composition event this past summer. A recital was held on Sunday Sept. 19 which featured the winners. Those who attended were treated to a variety of compositions and some delicious food.

Make sure to mark your calendars for the October MAPTA events which are highlighted in this Nuance issue:

October 3 - First YAR recital at Capitol Lakes

October 8 - first round table discussion on different games we use in our teaching at Debbie Yee's house

October 15 - Fall workshop featuring Kenneth Drake

Looking forward...

Debbie Yee
MAPTA President

Young Artists Recital *Sunday, Oct 3 1:00 pm Warmups - 1:30 pm Performance*
Capitol Lakes Retirement Center's Grand Hall, 333 W. Main Street

Practice begins at 1:00 pm with Performances starting at 1:30 pm. If the playing time of all students for a single recital exceeds 45 minutes, two recitals will be held with the second beginning around 2:30 pm.

Contact [Brian Hagen](#) or [Renee Farley](#) for more information.

Round Table Discussion Group *Friday, Oct 8 - 9:00 am*
Debbie Yee's house, 5718 Piping Rock Rd

Come share games that you have used with your students!
Contact [Debbie Yee](#) for more information.

Fall Workshop
"Connecting the Mind and the Fingers through Touch"
Friday, October 15, 2010 Registration 8:30 am
Ward-Brod, 2200 W Beltline Hwy



This year's workshop featured Kenneth Drake, Professor Emeritus at University of Illinois in Champaign-Urbana.

This workshop is open to all students, teachers and piano enthusiasts. Online registration has closed, but you may still register on-site the morning of the workshop.

For more information, contact [Gloria Chuang](#) (608)238-0603.

benefit from joining MAPTA?
Send them this issue of Nuances
by clicking the link below.



Piano Composition Festival is Music to Our Ears

[Shad Wenzlaff](#) 2010 Festival Chair



Congratulations to these MAPTA teachers for entering students in the 2010 Piano Composition Festival: Liz Agard, Dr. Gloria Chuang, Kristie Estervig, Linda Johnson, Tim Mueller, Jane Peckham, and Shad Wenzlaff!

The September 19 Awards Recital was an exciting event. We listened to a variety of pieces by students ages 8 to 18 (and one teacher too!). The 19 works for solo piano ranged from a Mozart-inspired sonatina, a Prelude, the sounds of "hurricanes" and "winter storms" and other highly creative ideas. Performers received a medal, certificate, and recognition in their category for merit.

You are invited to be a part of the 2011 Piano Composition Festival by joining our committee - now forming! (Please email Shad to learn more about how you can be involved in teaching composition)

It's not early to start teaching composition to your students and preparing for the next festival. The due date for submissions will be July 2011 and entry forms will appear in upcoming issues of *Nuances*. Next year's adjudicator will be Mr. Jeremy Hanson of the MacPhail Center for Music in Minneapolis.

Thank you teachers, parents, and composers for once again making our festival a rousing success!

Sonatina Festival Deadline *Friday, Oct 15*

The deadline for entering Rhapsody Arts Center's 10th Annual Sonatina Festival is October 15th. The competition will take place at Rhapsody Arts Center in Verona with the Awards Recital following at Full Compass Systems in Madison.

The annual event raises awareness, appreciation, and understanding of the sonata and sonatina musical forms and promotes music education. The competition is open to students of all ages and levels of study from Wisconsin, Illinois, and Iowa. Last year's festival included 168 entrants with 53 finalists and \$400 awarded in scholarships.



2009 Sonatina Festival Finalists

Download the [entry form](#) and find more information at rhapsodyarts.org.

Free PianoWorks for Adults Program *Saturday, Oct 16 10:30 am* Steinway Piano Gallery of Madison, 6629 Mineral Point Road, Madison



Designed for adults who want to learn more about pianos, how they work, and how they are different. This program will specifically explain the difference between upright and grand pianos.

Due to limited space, reservations are required. [Click here to register](#) or [here for more information](#).

PianoWorks is a free public service of Steinway Piano Gallery of Madison.

Pro Goals *Tuesday, Oct 19 9:00 - 11:00 am* Ward-Brodt, 2200 W Beltline Hwy

The Professional Goal Committee meets on the third Tuesday of October, November, January, February and March from 9-11:00 am at Ward Brodt.

For more information, see the Membership Directory or contact [Anita Schulz](#).

PSP *Friday, Oct 22 - 1:00 pm* Cheri Lewis' Home, 1706 Wild Oak Circle, Madison

Any MAPTA members interested in playing for each other in an informal home setting are welcome. Music need not be memorized. Contact [Ruth Heinecke](#) (608) 437-4634 for more information.



Young Artist Recital Deadline *Sunday, Oct 24*

The next Young Artist Recital will take place on Sunday, November 7, 2010 at Capitol Lakes

For information, see the Membership Directory or contact [Brian Hagen](#) or [Renee Farley](#).

WMEA Conference *October 27 - 30*
Monona Terrace Convention Center, Madison

 WMEA Logo

The WMEA celebrates its 50th Anniversary this year.

For details about this year's Wisconsin State Music Conference, click the logo to the left.

Monster Concert *Saturday, Oct 30 9:00 am - 5:00 pm*
Barnes & Noble - East Towne Mall

[Renee Farley](#)

If you would like an opportunity to play and not be recognized, this is your chance. Teachers sign up students for blocks of time by contacting [Joanna Grace](#) at (608)663-0257.

As of September 21, there are times available from 9-12:30. *All times from 12:30-5:00 have been previously reserved.*

You can download posters for your studio and coupons to use on October 30 only. Barnes & Noble will donate a portion of the day's profits to the American Family Children's Hospital. These can be copied and given to your students.



Calling all piano-playing ghouls and ghosts!

[Download the coupon](#)
[Download the poster](#)

This event is free and the students receive a treat at the end of their performances. The Monster Concert is sponsored by Madison Area Friends of Piano. MAPTA is a member of this group.

Questions? Contact [Renee Farley](#) (608) 271-2626.

PianoWorks! For Kids!! Great Ghouls Edition *Saturday, Oct 30 11:00 am*
Steinway Piano Gallery of Madison, 6629 Mineral Point Road, Madison



This fun and interactive program demystifies the piano and gets elementary and middle school students excited about making music.

The morning begins with a short, catchy video tour of a piano factory followed by hands-on exploration inside a piano to learn how 12,000 parts come together to make music.

Students are welcome to wear costumes for this spooky workshop!

Admission is free, but space is limited. [Click here to register](#) or [here for more information](#).

PianoWorks is a free public service of Steinway Piano Gallery of Madison.

MAPTA Board Meeting *Tuesday, Nov 2 8:30 am*
Steinway Piano Gallery of Madison, 6629 Mineral Point Road, Madison

MAPTA Continuing Ed Scholarships



Scholarship funds are available to MAPTA members for attendance at non-MAPTA events, such as regional and national conferences, events, etc. \$500 has been allocated for such scholarships for the 2010-11 year.

A teacher must [fill out this form](#) and forward it to the Vice President (currently Dr. Gloria Chuang). Upon board approval and following the event, the member will submit an article for *Nuances* (about 200 words) and make a short presentation about the content at a MAPTA General Meeting. Recipients will be reimbursed after submission of the article, and completion of presentation.

We hope you will take advantage of this opportunity to learn more about piano teaching, and gain valuable knowledge which can in turn be shared within our MAPTA community!

"Harmony for Humanity: Making a Better World Through Music" - under the direction of composer, clinician, and teacher Robert Vandall is fast approaching and the final details are being made. You can download the practice schedule [here](#).

For those students who are playing in the piano ensemble event, Alfred is going to provide autographed copies of a Robert Vandall piece to each as a special gift. And our committee has decided to offer a souvenir bag that students/ parents can purchase for \$5 as a "donation" to MAPTA that will have the PPT Date and MAPTA logo on it. Not only will it be a great reminder of the event, but it will also be perfect for toting music to and from lessons.

We are also planning to put a clip of the premier of Robert Vandall's "Fanfare Celebration" on YouTube. Alfred has already given permission for MAPTA to record the event, but we will need to get parental permission from those students who are performing on our opening number. We also will be needing help with various aspects of the rehearsals and concert from those teachers who have students registered for the event.

Stay tuned for more information as we head down the final stretch of this exciting opportunity for MAPTA teachers and students!

Important dates:

Mandatory rehearsal - Sun. Nov . 14 - Steinway Piano Gallery of Madison

Mandatory rehearsal - Sat. Nov . 20 Oregon Performing Arts Center Oregon H.S.

PPT Event - Sun. Nov 21 Oregon Performing Arts Center

Conductor: Robert Vandall- WOW!! for us.

Contact co-chairs [Diane Madsen](#) or [Jeanne Felix](#) with any questions.

Please encourage all your adult students to participate in this year's Fall Adult Music Social. The event is fairly informal and will help pianists at all levels to become more comfortable sharing their music with others. Pieces can be memorized or played with music. Adult students who would like to first learn more about the social are also welcome to attend without playing that evening. Those attending are requested to bring a small plate of cookies or other food to share.

Call Cheri at (608) 222.5125 if you need directions or have questions.

Young Madison Talents in European Festivals



Mayumi Tsuchida at Verbier Festival

This summer, I spent two weeks at the annual music festival in Verbier, Switzerland where top musicians, including Menahem Pressler, Alfred Brendel, Dimitri Bashkurov, Martha Argerich, Yevgeny Kissin, Lynn Harrell, and Sara Chang performed and presented master classes.

Mayumi Tsuchida, who studied piano with me in Madison, attended the academy of the festival, where she performed Schumann's Fantasy, Chopin's G minor Ballade, a Hayden Sonata and the Brahms Horn Trio. Mayumi made her debut recital in one of Madison's churches when she was six-years-old and has been developing an exciting musical career ever since.

Mayumi's younger sister, Rieko, performed in August at the Dutch BergenMusic Festival with Ravel's Gaspard de la Nuit, Chopin's Polonaise Fantasy and a Hayden sonata. She played beautifully and was immediately invited to play the same program a few days later in another Dutch city. Before coming to the Netherlands, she reached the finals at the Eastman School of Music Junior Piano competition.

Noriko Yabe, whom I coach when she is in her Amsterdam studio, also lived in Madison some years ago, and regularly accompanies cellists at the same Bergen festival. At age twelve, Noriko performed with the Madison Symphony Orchestra.

As a former teacher of these three young talents, I am very happy to follow their piano careers! As a former student of the late Yvonne Loriod-Messiaen, I am understandably pleased that several of her present and former students also study Messiaen's "Preludes", his "Vingt Regards....." and Etudes.

It is our honor to co-chair the Honors Festival 2011. Although it is still early in the year, we would like to encourage you to start thinking of any students you might have, 10 - 18 year olds, who might want to work towards the auditions taking place on Saturday, February 19th, 2011.

Students may play one or two pieces from memory within a 10 minute time slot for two wonderful guest judges. We highly encourage the preparation of unique and imaginative repertoire by lesser known composers, and look forward to an exciting Honors Recital on Sunday, March 6th.

The Registration Form will be available in an upcoming issue of Nuances.

Janet Smith & Helga Swatzak

General Meeting Minutes

Minutes from each General Meeting is published in each issue of Nuances in accordance with the bylaws.



MAPTA General Meeting Tuesday September 14, 2010
Called to order 10:30 am.

1. Treasurer's Report: Income for June-August \$4,219.18, mostly membership fees. Expenses: \$574.88, majority is for printing of Directory. Total assets \$12,723.79. Canceled yellow pages ad. Transferred money from M&I to Summit Credit Union.
2. Membership: Cynthia Stephan is not here for a report but numbers seem to be similar to last year.
3. Referral: Linda Johnson has submitted the new list to the webmaster and should be updated very soon. Improvements made to the listing including an alphabetical list and more visible specialty listings.
4. Hospitality: Thanks to Stacy Regehr for bringing treats for today. She is also in charge of babysitting.
5. Publicity: Joanna Grace solicits publications for the Isthmus - announcements due the Friday before the Thursday publication for any MAPTA events.
6. Nuances: Sept 21 is the deadline for submitting articles to Grant Billings.
7. Website: There is a new website being designed but it is in the very early stages right now. Ben Garber is in charge of it.
8. Programs: Patty Ladpli has set the season for programs.
9. Fall Workshop: Gloria Chuang is running the workshop, which will be on Friday October 15 at Ward Brodt. Kenneth Drake is the speaker, "Connecting the Mind and the Fingers Through Touch." It should be a highly interactive session. Registration is due by Friday October 1, you can go to the past Nuances for a registration form, or an email reminder will be sent soon.
10. PSP: Meets this Friday Sept 17 at 1 pm. They usually meet the 3rd Friday of the month, perform informally for each other.
11. Scholarship through MAPTA. Scholarships are available
12. Professional Goals: Tuesday, 9/21 at 9-11 am at Ward Brodt. Go through associate door into the disklavier room.
13. Young Artist Recitals: Next recital October 3, registration due Sept 19.
14. Adult Music Socials: No official word yet but usually the first one is in November. See Cheri Lewis for details.
15. PPT: This year's PPT is November 21. \$15 each student. An email with registration forms and parent letters sent last week. See Jeanne Felix for hard copies. Tentative rehearsal schedules also available, mandatory rehearsals November 14 and 20. Out of Tune March has been cut out due to low interest. Goal is to fill all 10 pianos, dream is to make it the most successful one ever. Highlight is that Robert Vandall is the conductor, it's a real chance of a lifetime for the students. (Mr. Vandall will be available for autographing pieces of his they've played.) NEW THIS YEAR: They'll be looking for parent volunteers for the concert itself. 5 spots left for the teacher piece.
16. Piano Composition Festival: This Sunday September 19, 3 pm, is the winners recital, awards ceremony and reception. 27 entrants, David Dies was the judge. He selected 19 students.
17. New business: Organ subscription series running at the OvertureCenter.
18. Instituting a roundtable discussion at Debbie Yee's house. Topic is "Games in Your Studio". October 8 at 9 am, RSVP not necessary but preferred. Hopefully this will become regular.
19. Hospitality position still open.
20. Next board meeting Sept 28 at 8:30 am at Debbie Yee's house.

Meeting adjourned at 10:55 am.

Respectfully submitted,
Denise Taylor, Secretary

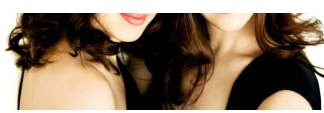
The Final Note

[Catherine Sili](#)



On October, 29, 2010 at 8:00 pm, two young pianists from Madison, Christina and Michelle Naughton, will perform with the Wisconsin Chamber Orchestra.

The twins, who's early performances included MAPTA recitals, now live in Philadelphia where they attend the Curtis Institute



Michelle (l) and Christina (r) Naughton

of Music. They have performed with the Philadelphia Orchestra, the New Jersey Symphony, the Milwaukee Symphony and the Hong Kong Philharmonic.

For more information about their concert, click [here](#).



Email Marketing by

